



# **Radar Systems Engineering**

## **Lecture 10 Part 2**

### **Radar Clutter**

**Dr. Robert M. O'Donnell**  
**IEEE New Hampshire Section**  
**Guest Lecturer**

IEEE New Hampshire Section



# Block Diagram of Radar System

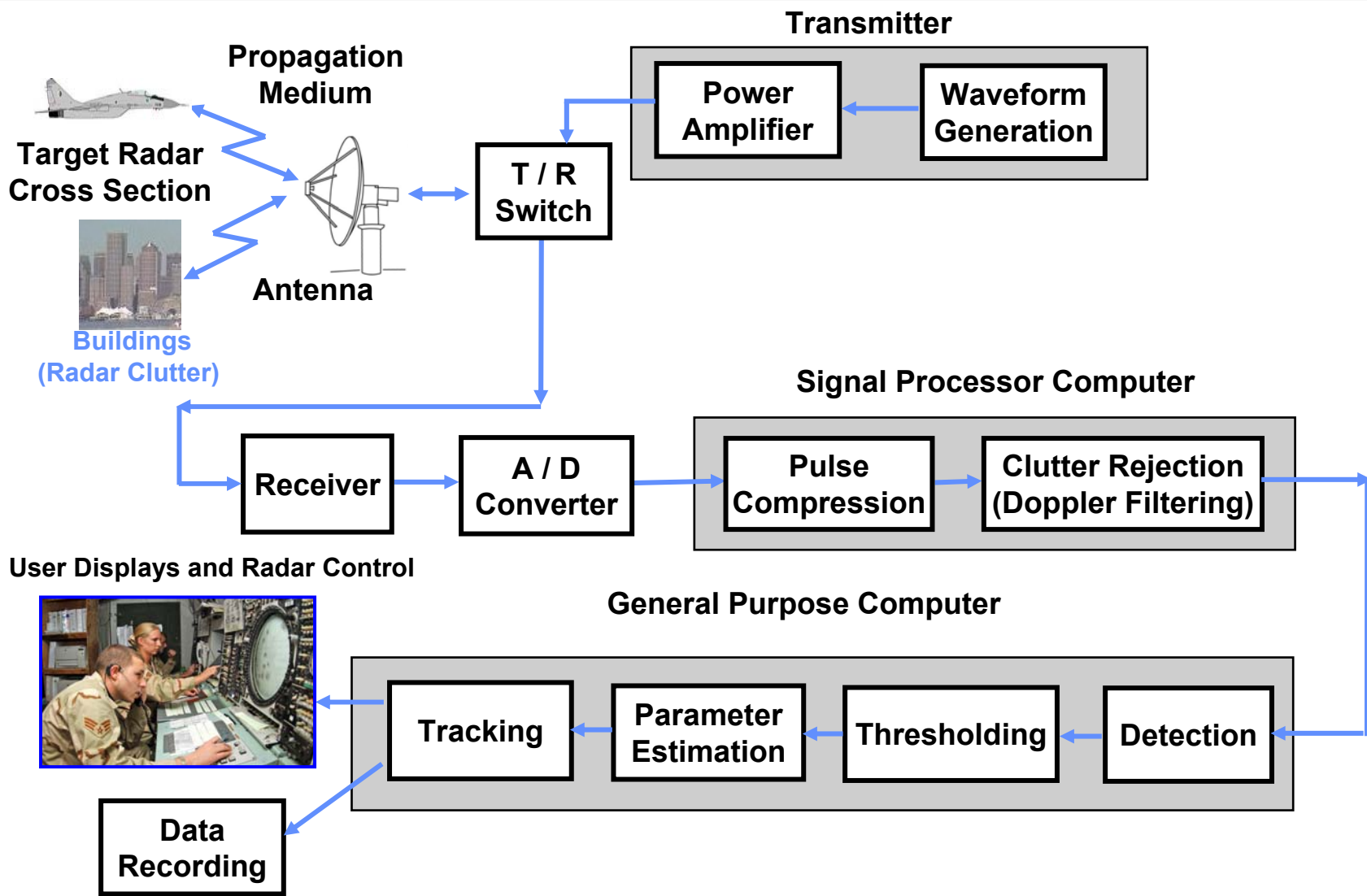


Photo Image  
Courtesy of US Air Force  
Used with permission.



# Outline



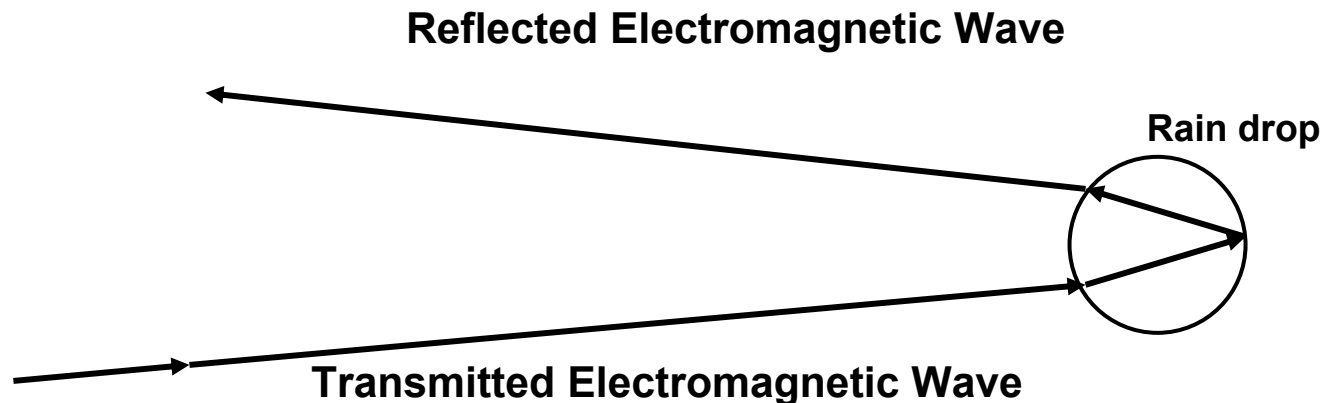
- **Motivation**
- **Backscatter from unwanted objects**
  - **Ground**
  - **Sea**
  - – **Rain**
  - **Birds and Insects**



# Attributes of Rain Clutter



- Rain both attenuates and reflects radar signals
- Problems caused by rain lessen dramatically with longer wavelengths (lower frequencies)
  - Much less of a issue at L-Band than X-Band
- Rain is diffuse clutter (wide geographic extent)
  - Travels horizontally with the wind
  - Has mean Doppler velocity and spread

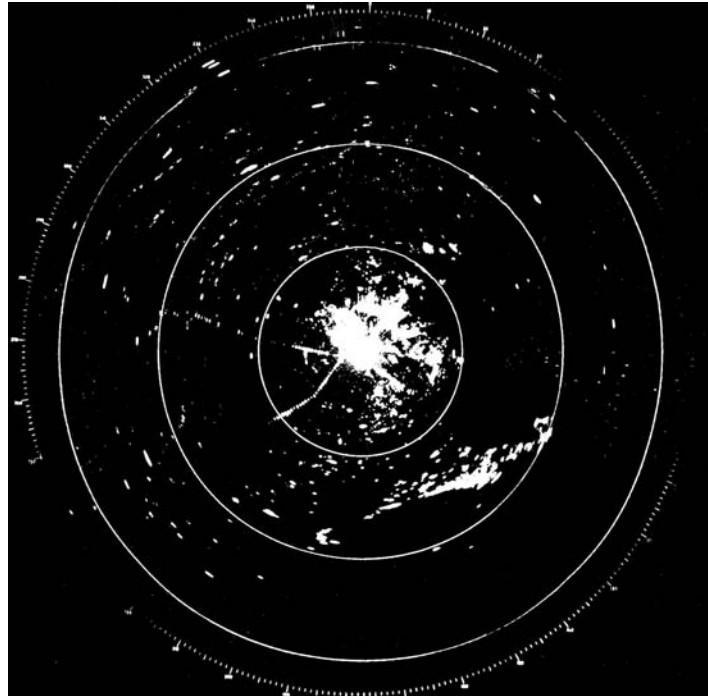




# PPI Display Radar Normal Video



**Clear Day (No Rain)**



**10 nmi Range Rings on PPI  
Display  
August 1975, FAA Test  
Center  
Atlantic City, New Jersey**

Courtesy of FAA

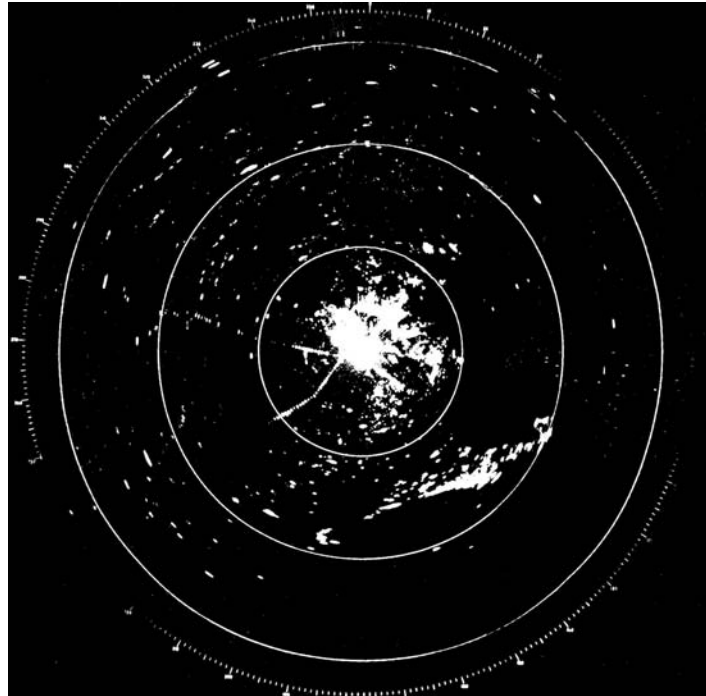
**Airport Surveillance Radar  
S Band  
Detection Range - 60 nmi on  
a 1 m<sup>2</sup> target**



# PPI Display Radar Normal Video



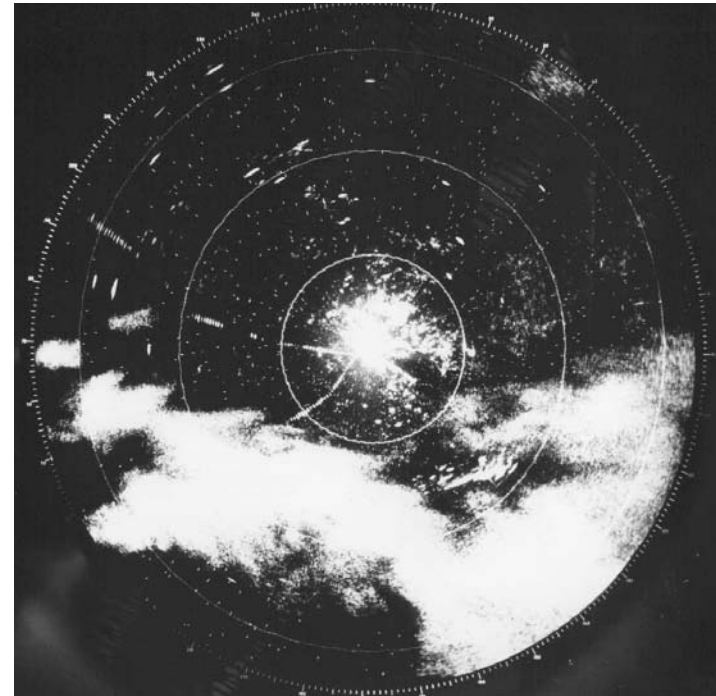
**Clear Day (No Rain)**



Courtesy of FAA

**Airport Surveillance Radar  
S Band  
Detection Range - 60 nmi on  
a 1 m<sup>2</sup> target**

**Day of Heavy Rain**



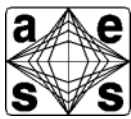
Courtesy of FAA

**10 nmi Range Rings on PPI  
Display  
August 1975, FAA Test  
Center  
Atlantic City, New Jersey**

IEEE New Hampshire Section  
IEEE AES Society



# Reflectivity of Uniform Rain ( $\sigma$ in $\text{dBm}^2/\text{m}^3$ )



Rain Type	Frequency			
	S 3.0 GHz	C 5.6	X 9.3	Ka 35
Drizzle, 0.25 mm/hr	-102	-91	-81	-58
Light Rain, 1 mm/hr	-92	-81.5	-72	-49
Moderate, 4 mm/hr	-83	-72	-62	-41
Heavy Rain, 16 mm/hr	-73	-62	-53	-33

Figure by MIT OCW.

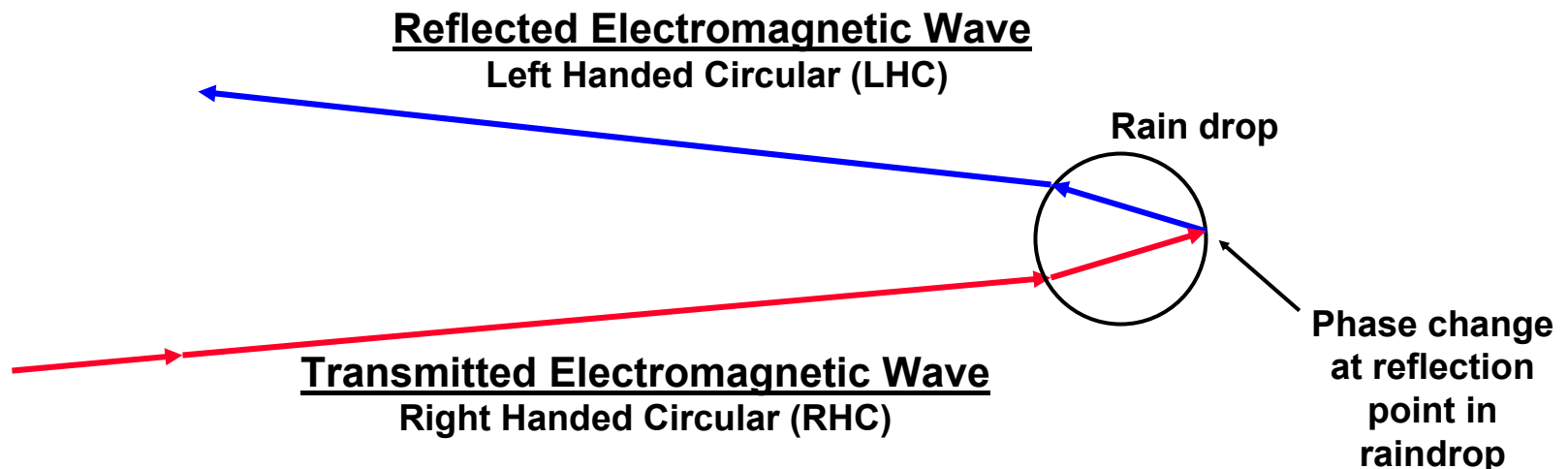
- Rain reflectivity increases as  $f^4$  (or  $1/\lambda^4$ )
  - Rain clutter is an issue at S-Band and a significant one at higher frequencies



# Effect of Circular Polarization on Rain Backscatter



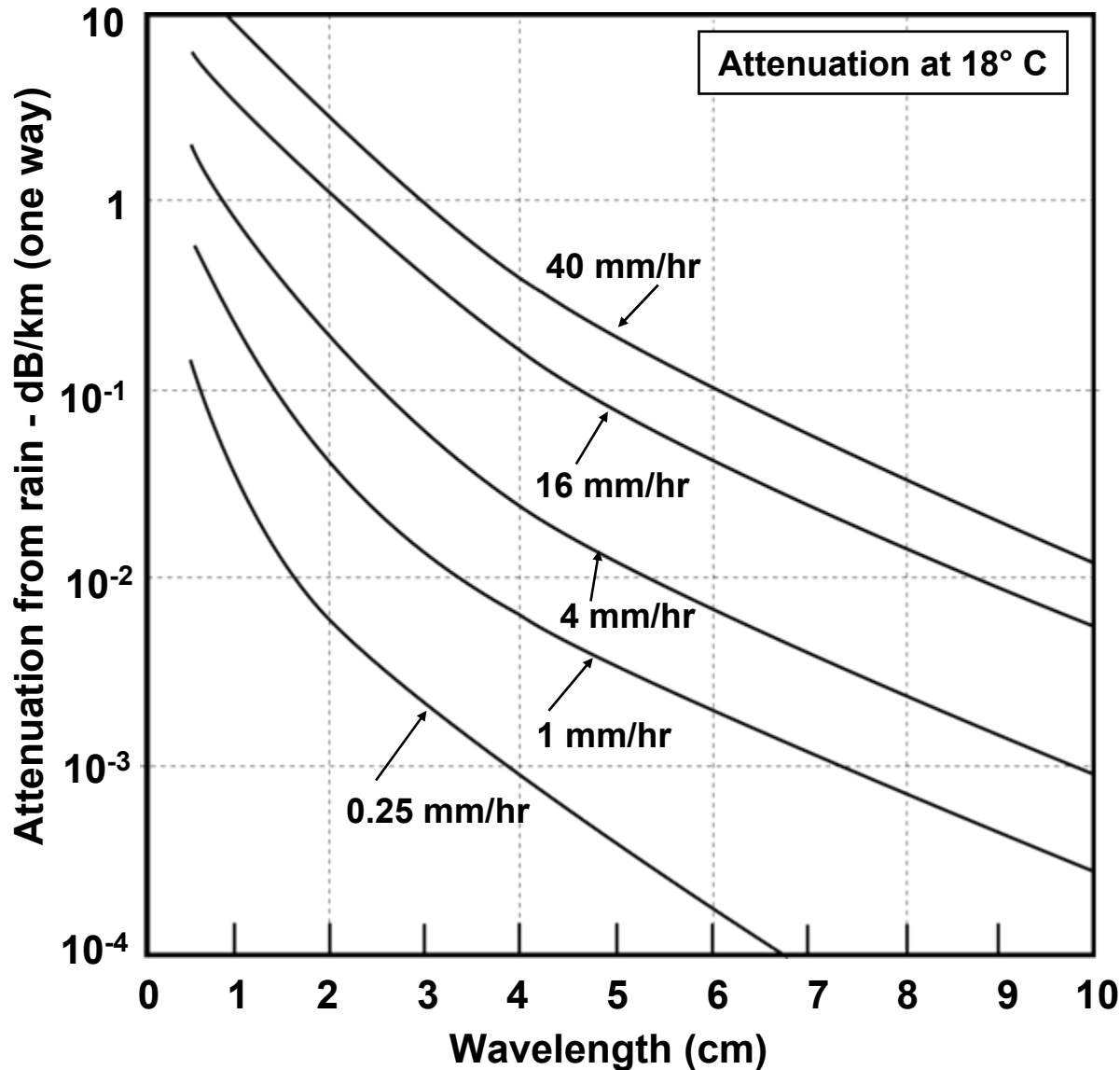
- **Assumption:** Rain drops are spherical
- **Circular polarization is transmitted (assume RHC),**
  - Reflected energy has opposite sense of circular polarization (LHC)
- **Radar configured to receive only the sense of polarization that is transmitted (RHC)**
  - Then, rain backscatter will be rejected ( $\sim 15$  dB)
- **Most atmospheric targets are complex scatterers and return both senses of polarization; equally (RHC & LHC)**
  - Target echo will be significantly attenuated







# Attenuation in Rain



## Rainfall Characterization

- Drizzle – 0.25 mm/hr
- Light Rain – 1 mm/hr
- Moderate Rain – 4 mm/hr
- Heavy Rain – 16 mm/hr
- Excessive rain – 40 mm/hr

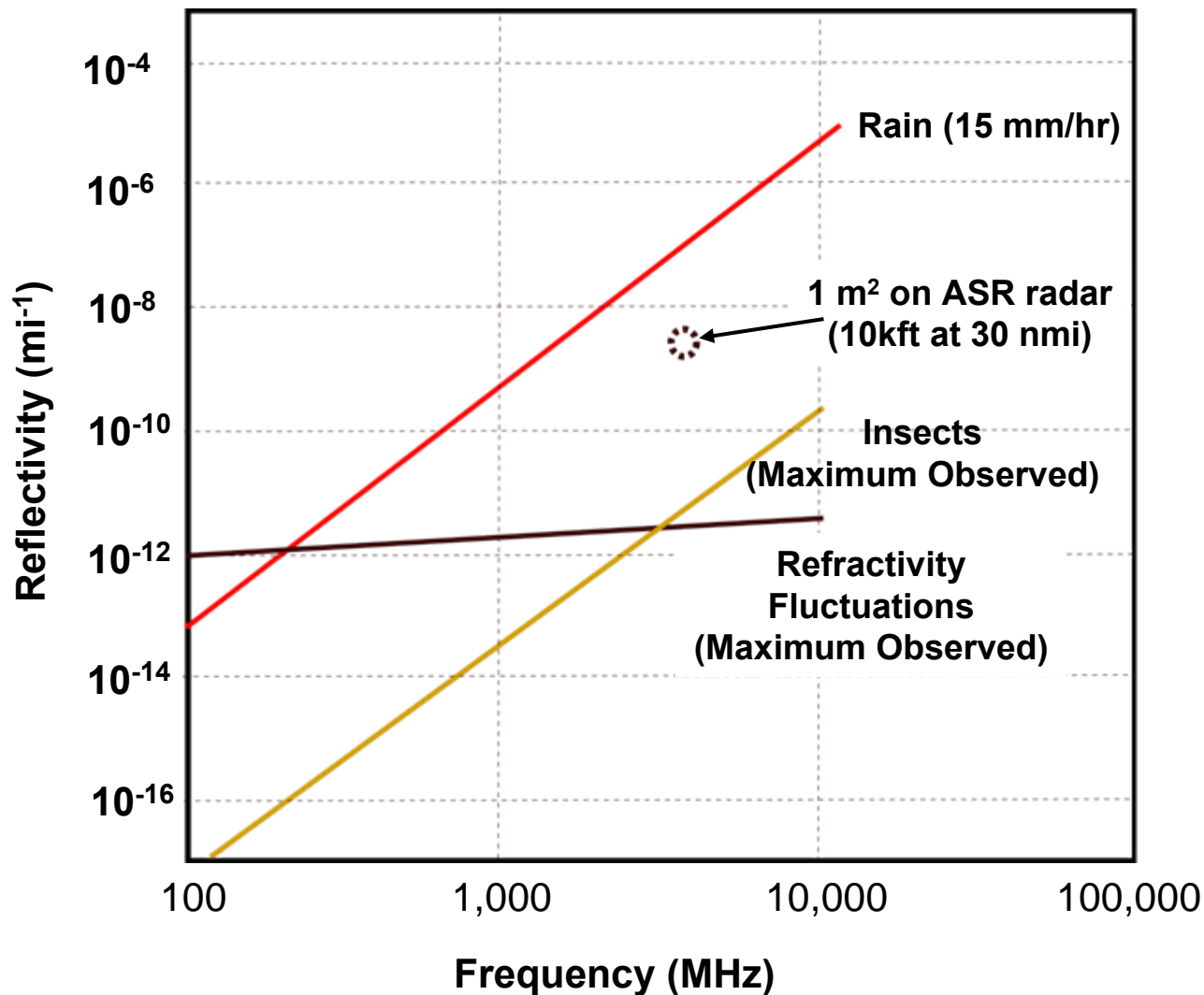
## In Washington DC

- 0.25 mm/hr exceeded 450 hrs/yr
- 1 mm/hr exceeded 200 hrs/yr
- 4 mm/hr exceeded 60 hrs/yr
- 16 mm/hr exceeded 8 hrs/yr
- 40 mm/hr exceeded 2.2 hrs/yr

Adapted from Skolnik, Reference 6



# Reflectivity vs. Frequency





# Reflectivity of Uniform Rain ( $\sigma$ in $\text{dBm}^2/\text{m}^3$ )



Rain Type	Frequency						
	S 3.0 GHz	C 5.6	X 9.3	Ku 15.0	Ka 35	W 95	mm 140
Heavy Stratus Clouds				-100	-85	-69	-62
Drizzle, 0.25 mm/hr	-102	-91	-81	-71	-58	-45*	-50*
Light Rain, 1 mm/hr	-92	-81.5	-72	-62	-49	-43*	-39*
Moderate, 4 mm/hr	-83	-72	-62	-53	-41	-38*	-38*
Heavy Rain, 16 mm/hr	-73	-62	-53	-45	-33	-35*	-37*

\* Approximate

$$\text{Reflectivity } \sigma = \frac{\pi^5}{\lambda^4} |\mathbf{K}|^2 \sum \mathbf{D}^6$$

$\lambda$  = Wavelength

$$|\mathbf{K}|^2 = \left| \frac{\mathbf{n}^2 - 1}{\mathbf{n}^2 + 1} \right| \text{ Complex Index of Refraction}$$

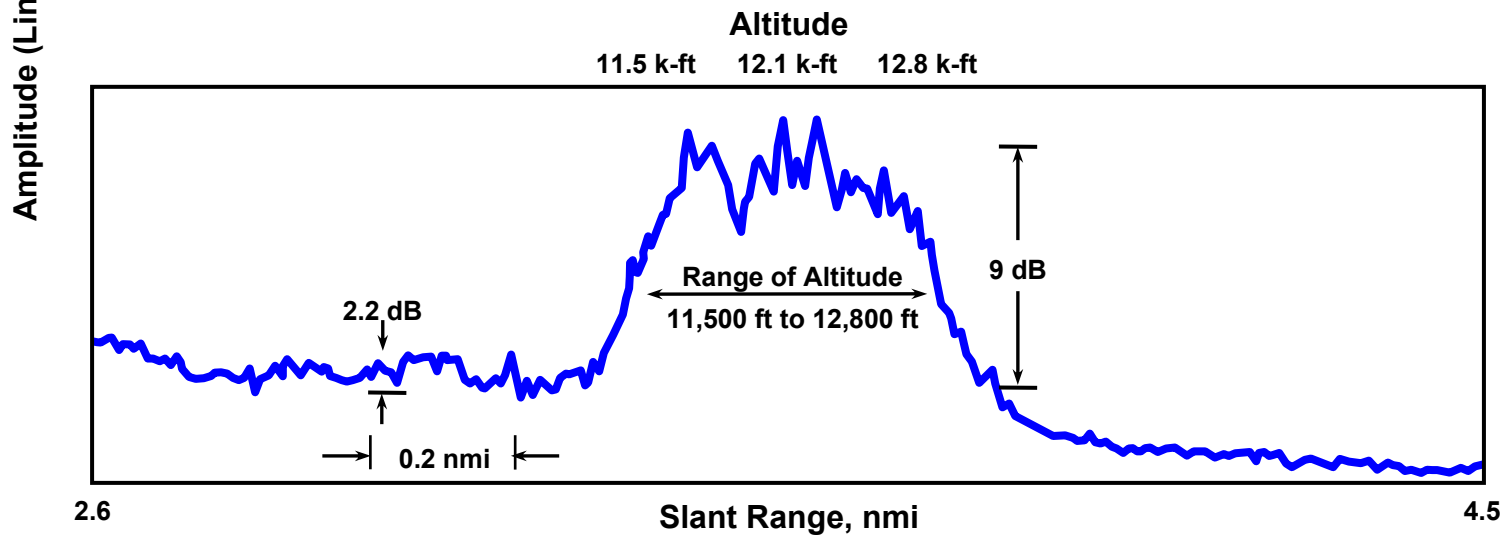
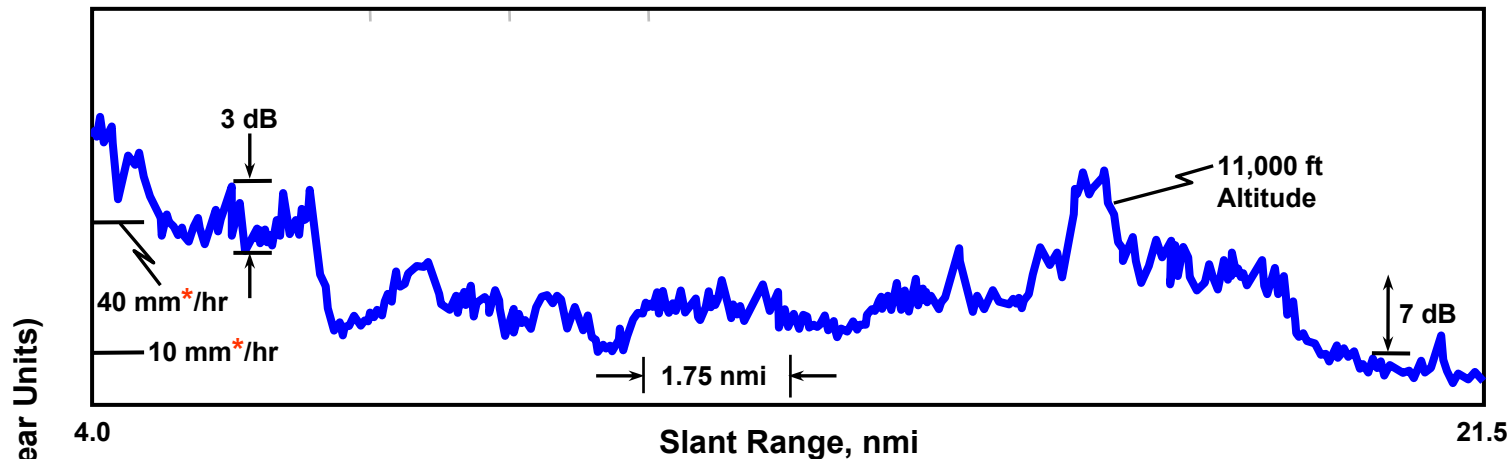
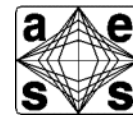
= 0.93 For Rain

$\mathbf{D}$  = Droplet Diameter

Date Table Adapted from Nathanson,  
Reference 3



# Heavy Uniform Rain – Backscatter Coefficient

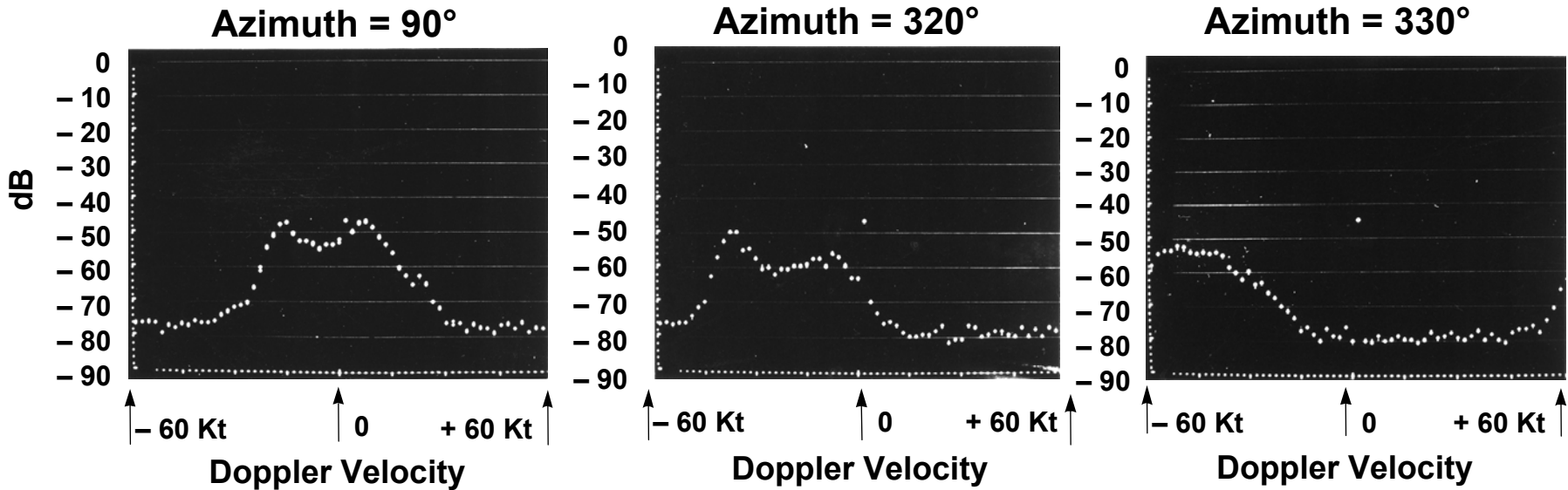


\* Theoretical Rainfall Rate

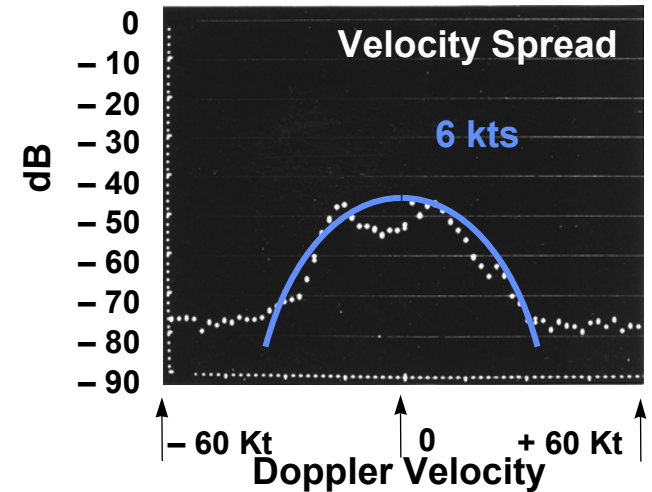
Adapted from Nathanson, Reference 3



# Measured S-Band Doppler Spectra of Rain



- Rain is not Gaussian
- Mean velocity varies as storm moves by radar
- In these examples the rainfall rate was approximately 20 mm/hr
- Winds 30 kts on ground, 50 kts at 6000 ft

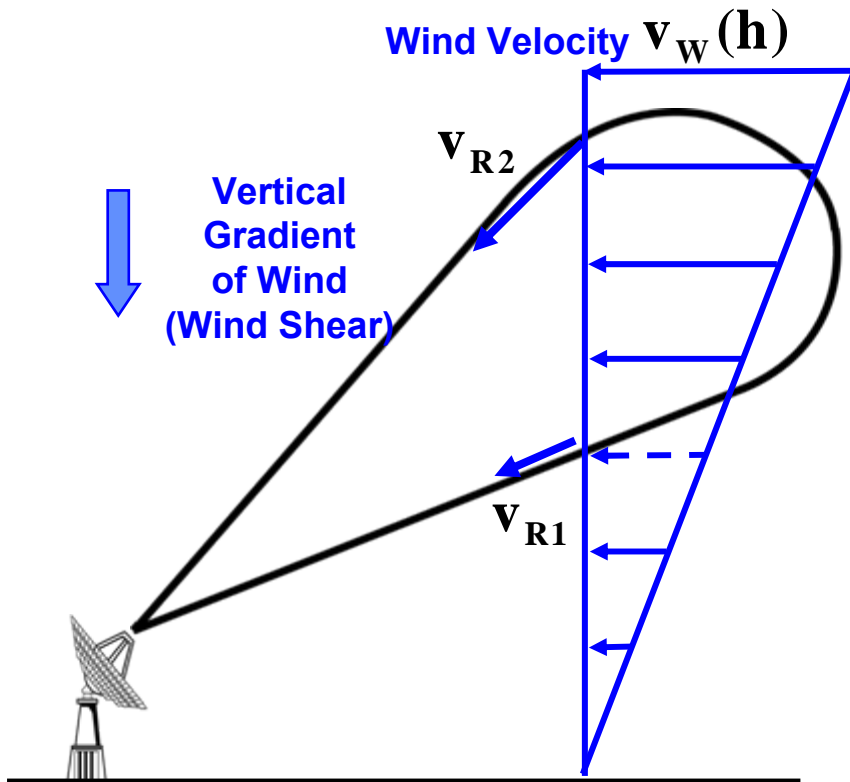




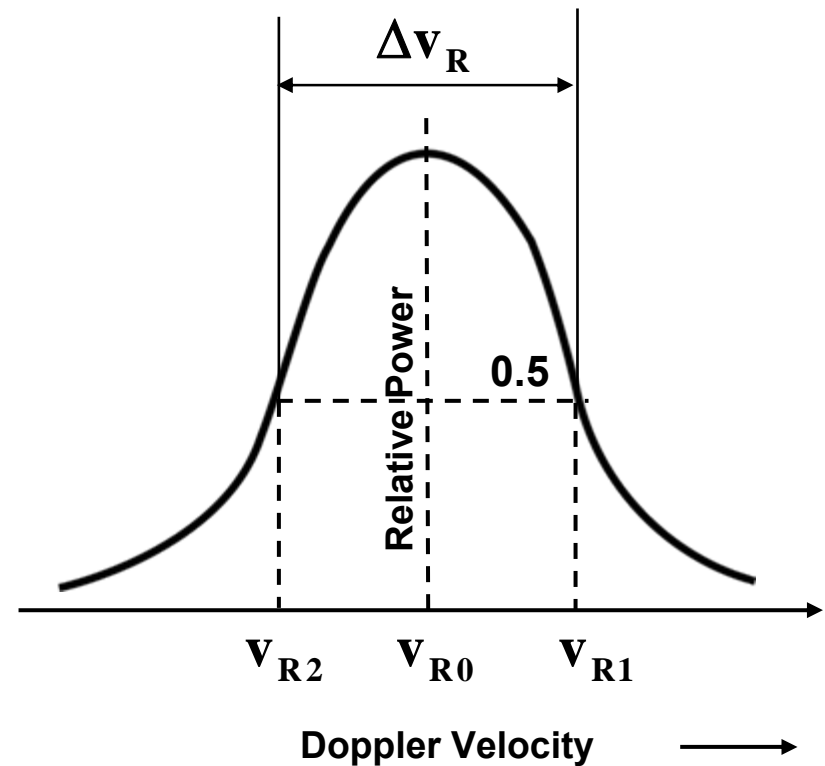
# Effects of Wind Shear on the Doppler Spectrum



## Cross Sectional Sketch of Radar Beam With Wind Blown Rain



## Velocity Spectrum Of Rain



Adapted from Nathanson, Reference 3



# Nathanson Rain Spectrum Model



- Nathanson model for velocity spread of rain

$$\sigma_v = \sqrt{\sigma_{\text{Shear}}^2 + \sigma_{\text{Turb}}^2 + \sigma_{\text{Beam}}^2 + \sigma_{\text{Fall}}^2}$$

$k$  = Wind Shear Gradient (m/s/km)  
(~4.0 averaged over 360°)

$R$  = Slant range (km)

$\theta, \phi$  = Horizontal and vertical two way beam widths (radians)

$\beta$  = Azimuth rel. to beam direction at beam center

$\psi$  = Elevation angle

$w_o$  = Wind speed (m/s)

$$\sigma_{\text{Shear}} = 0.42 k R \phi \text{ (m/s)} \quad (\sigma_{\text{Shear}} \leq 6.0)$$

$$\sigma_{\text{Turb}} = 1.0 \text{ (m/s)}$$

$$\sigma_{\text{Beam}} = 0.42 w_o \theta \sin \beta \text{ (m/s)}$$

$$\sigma_{\text{Fall}} = 1.0 \sin \psi \text{ (m/s)}$$

- Typical Values:

$$\sigma_{\text{Shear}} \approx 3.0 \text{ m/s} \quad \sigma_{\text{Beam}} \approx 0.25 \text{ m/s} \quad \longrightarrow \quad \sigma_v \approx 3.3 \text{ m/s}$$

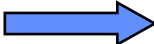
$$\sigma_{\text{Turb}} \approx 1.0 \text{ m/s} \quad \sigma_{\text{Fall}} \approx 1.0 \text{ m/s}$$

Adapted from Nathanson, Reference 3



# Outline

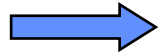


- **Motivation**
- **Backscatter from unwanted objects**
  - **Ground**
  - **Sea**
  - **Rain**
  -  – **Birds and Insects**





# Bird Clutter



- **General properties**
- **Bird populations and density**
  - Migration / Localized travel  
Land / Ocean
  - Variations  
Geography, Height, Diurnal, Seasonal etc
- **Radar Cross Section**
  - Mean / Fluctuation properties
- **Velocity / Doppler Distribution**
- **Effects of Birds on radar**
  - Sensitivity Time Control (STC)



# General Properties of Birds



- **Good RCS model for bird**
  - **Flask full of salt water**
  - **Expanding and contracting body, at frequency of wing beat, is the dominant contributor to individual bird radar cross section fluctuations**
- **Since many birds are often in the same range-azimuth cell, the net total backscatter is the sum of contribution from each of the birds, each one moving in and out of phase with respect to each other.**

Erlenmeyer Flask



Courtesy of tk-link

Snow Goose



Courtesy of pbonenfant

Sea Gull



Courtesy of jurvetson



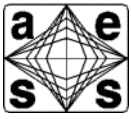
# General Properties of Birds



- **Since birds move at relatively low velocities, their speed, if measured, can be used to preferentially threshold out the low velocity birds.**
  - **Direct measurement of Doppler velocity**
  - **Velocity from successive measurement of spatial position**  
Range and angle
- **Even though the radar echo of birds is relatively small, birds can overload a radar with false targets because:**
  - **Often bird densities are quite large, and**
  - **Bird cross sections often fluctuate to large values.**
- **A huge amount of relevant research has been done over the last 20 years to quantify:**
  - **The populations of bird species, their migration routes, and bird densities, etc., using US Weather radar data (NEXRAD)**
  - **Major Laboratory efforts over at least the last 20 years at Clemson University and Cornell University**



# Bird Clutter



- **General properties**
- • **Bird populations and density**
  - **Migration / Localized travel**  
Land / Ocean
  - **Variations**  
Geography, Height, Diurnal, Seasonal etc
- **Radar Cross Section**
  - **Mean / Fluctuation properties**
- **Velocity / Doppler Distribution**
- **Effects of Birds on radar**
  - **Sensitivity Time Control (STC)**



# Bird Breeding Areas and Migration Routes

Gadwall



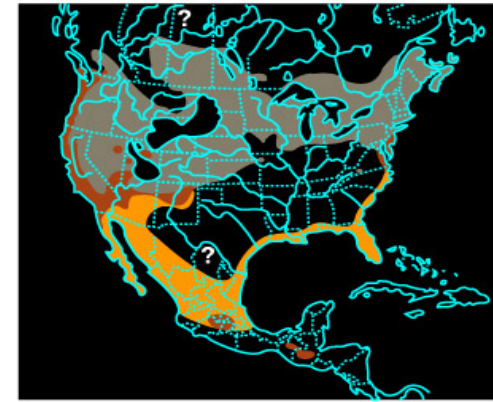
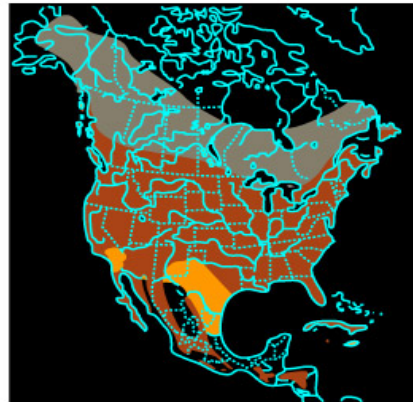
Northern Flicker



Virginia Rail



Photos courtesy of vsmithuk, sbmontana, and khosla.



■ Breeding ■ Year-round ■ Wintering

Figure by MIT OCW.

Along the Gulf Coast, during the breeding season, wading and sea bird colonies exist that have many tens of thousands of birds. Ten thousand birds are quite common. These birds are large; weighing up to 2 lbs and having wingspreads from 1 to 6 feet.





# Bird Breeding Areas and Migration Routes



### Spotted Towhee



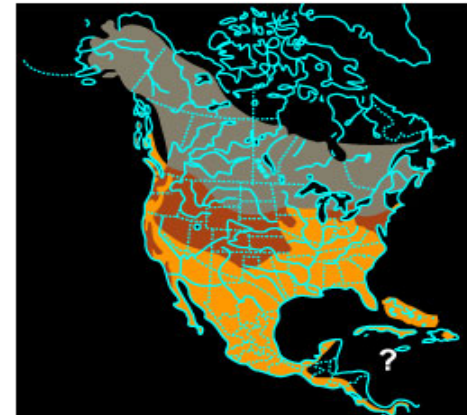
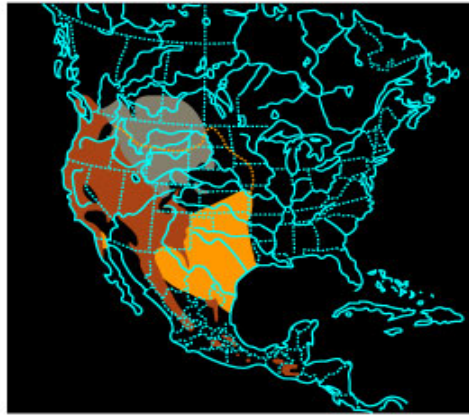
### Black Tern



### Northern Harrier



Photos courtesy amkhosla, Changhua Coast Conservation Action, and amkhosla.



Breeding
  Summer Non-breeding
  Year-round
  Wintering

Figure by MIT OCW.

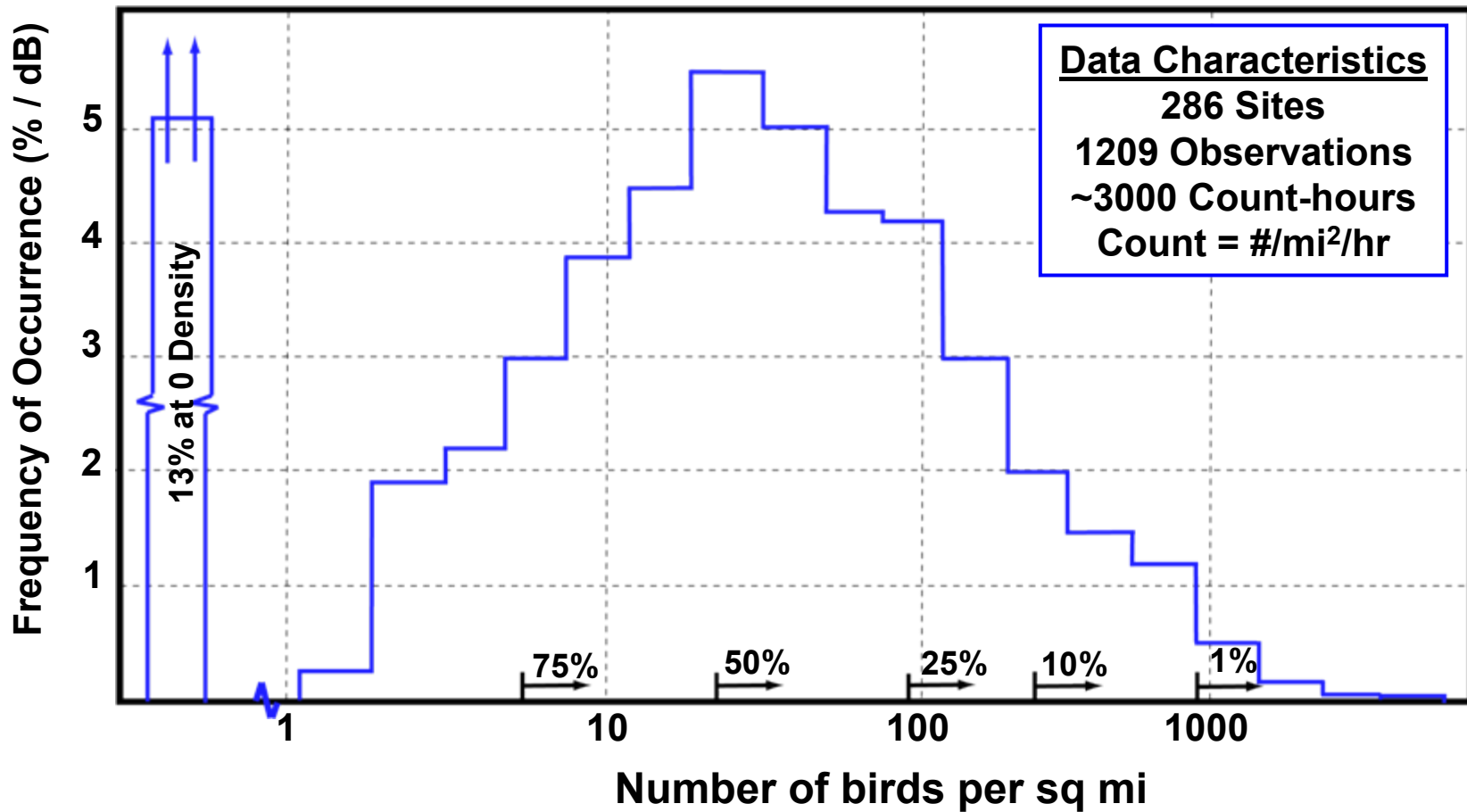
In the lower Mississippi Valley, over 60 blackbird roosts have been identified with greater than 1 million birds each. Many smaller roosts also exists. These birds disperse several tens of miles for feeding each day.



# Density of Migrating North American Birds



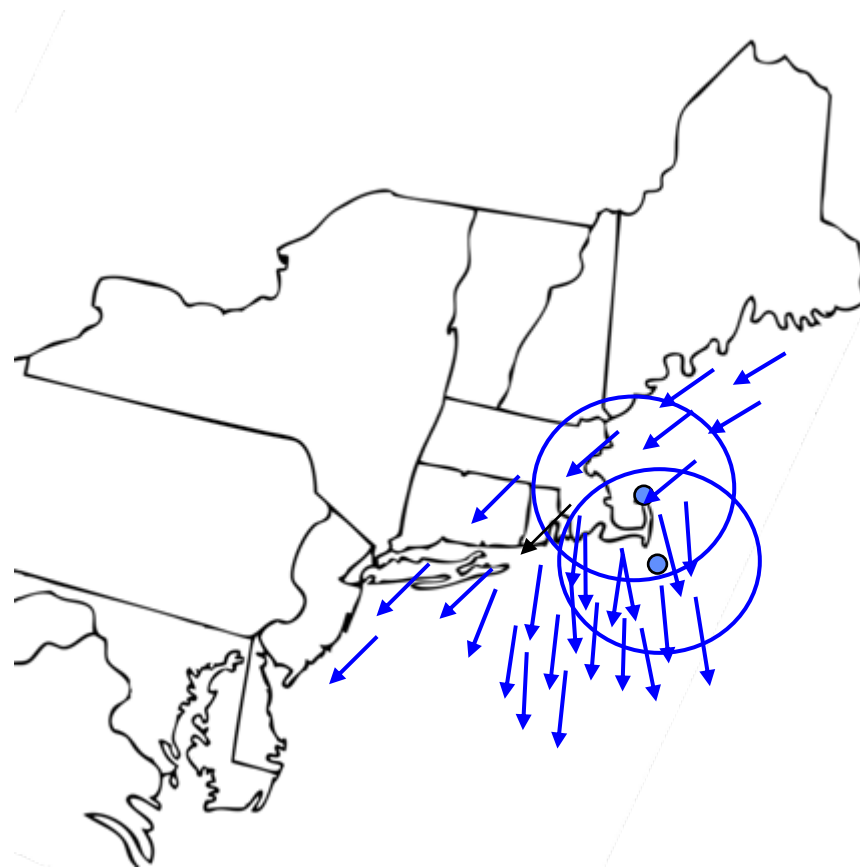
Evening of 3 - 4 October 1952



Adapted from Pollon, reference 7



# Migratory Bird Patterns (Off the US New England Coast)



↓  
**Direction of Bird Migration**

**Circles note coverage of 2 radars, one at tip of Cape Cod, the other, offshore on a "Texas tower"**

**Bird migrations have been tracked by radars from the Northeast United States to South America and the Caribbean have on Bermuda at altitudes of 17 kft**

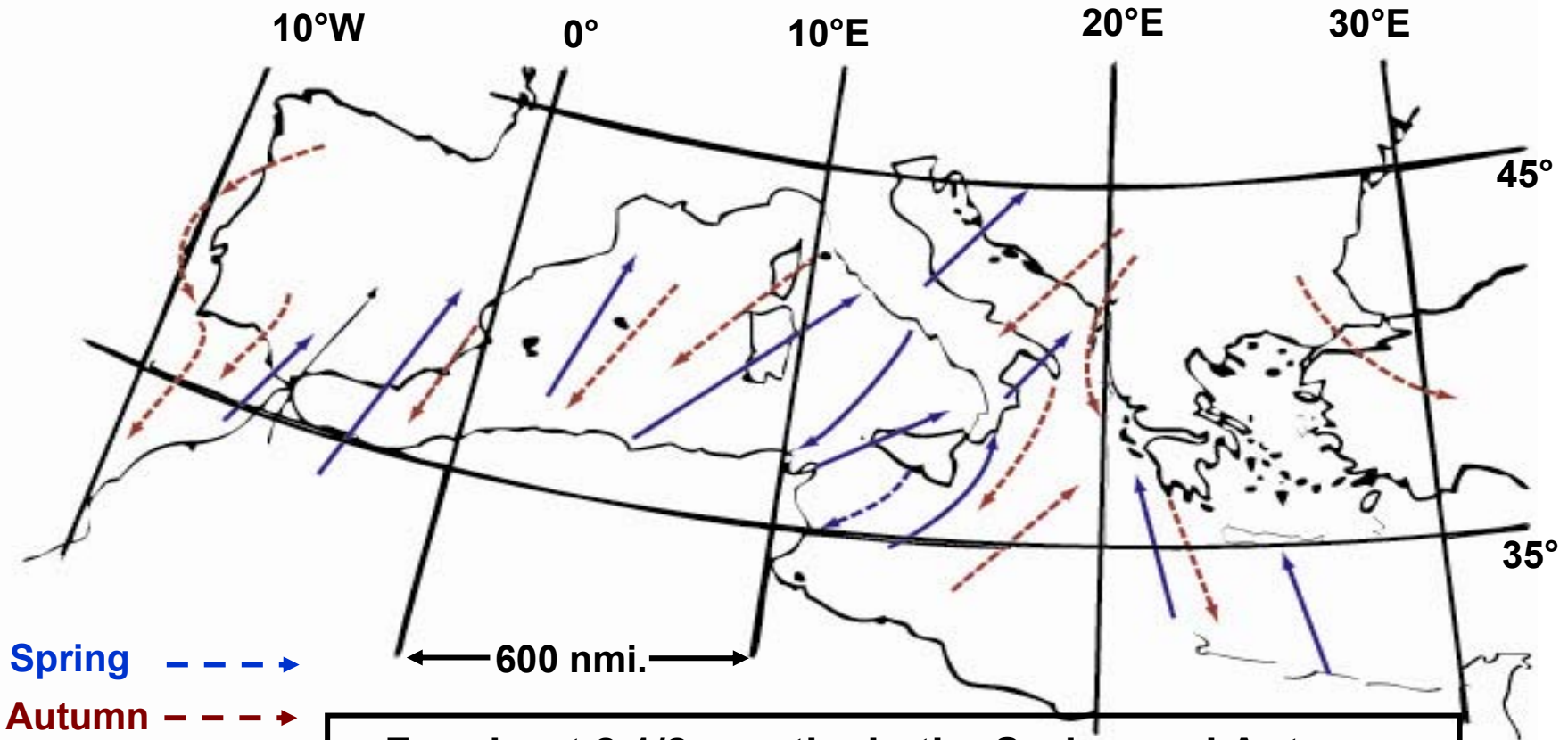
Adapted from Eastwood reference 8

**IEEE New Hampshire Section  
IEEE AES Society**





# Bird Migration across the Mediterranean Sea

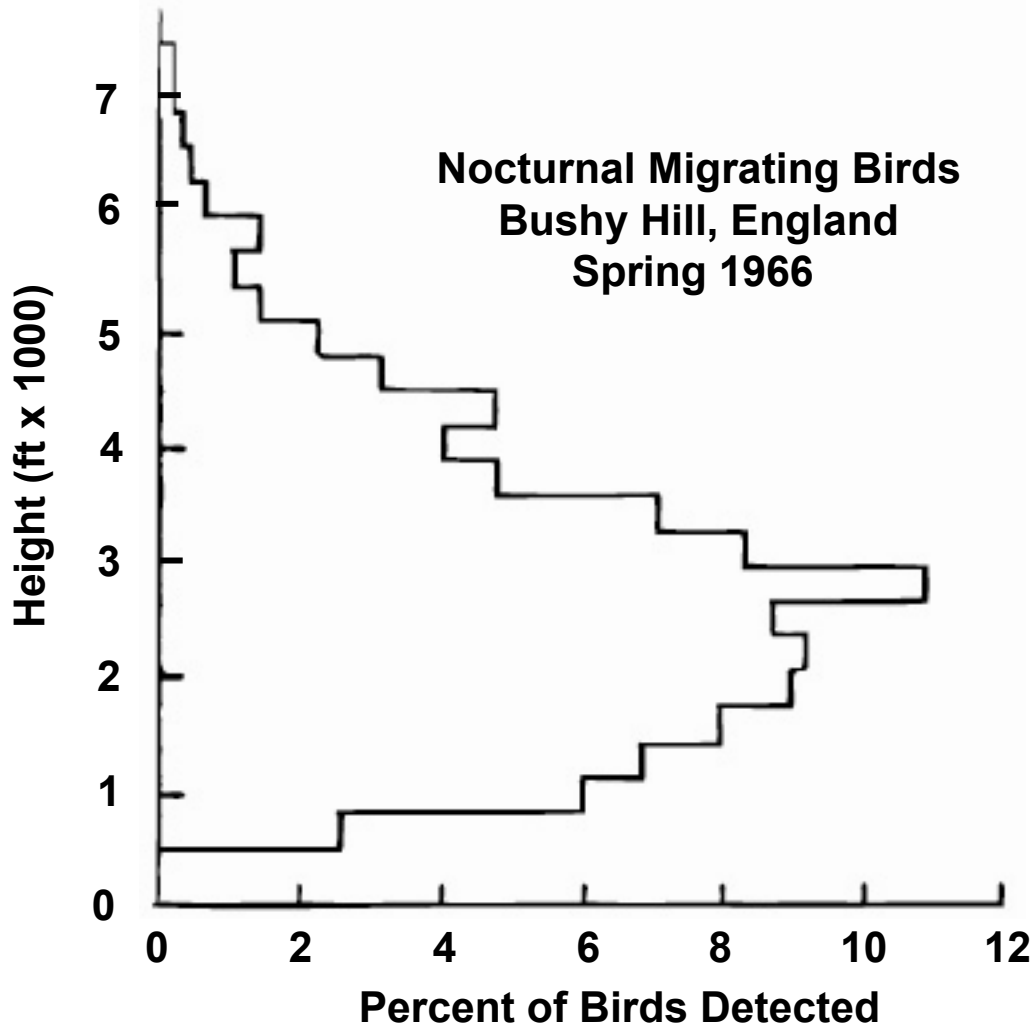


**For about 2 1/2 months in the Spring and Autumn, there is heavy bird migration, to and from, Europe and Africa**

Adapted from Eastwood  
reference 8



# Altitude Distribution of Migrating Birds



**Altitude distributions differ for migrating and non-migrating birds**

**The presence of cloud cover effects the bird height distribution**

**Distance of their migration can influence migration altitude (NE United States to South America)**

**Over land vs. over sea migration**

**Day vs. night migration**

**Non-migrating birds stay closer to the ground**

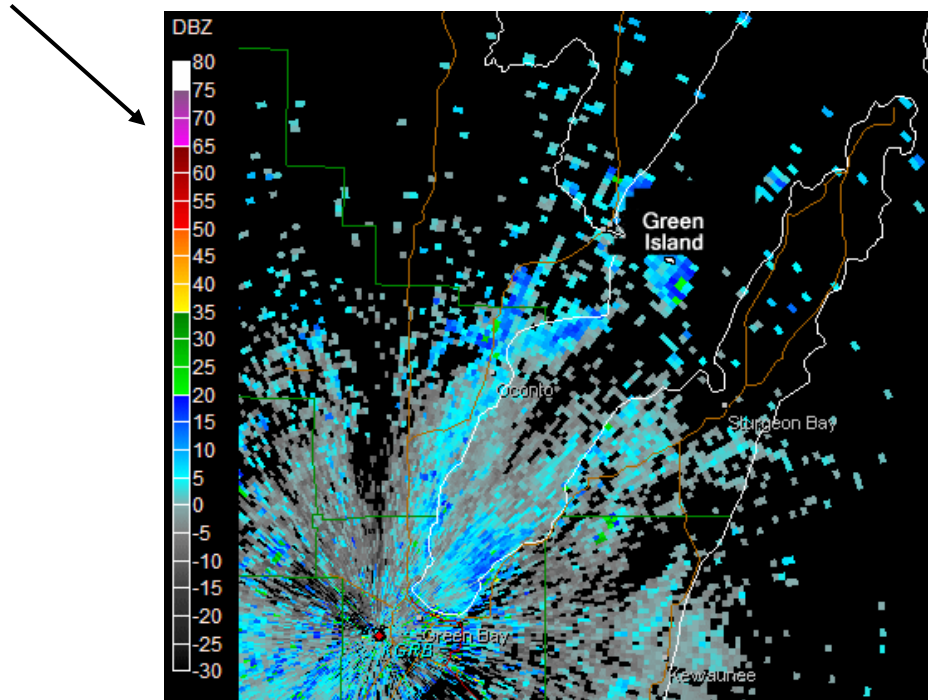
Adapted from Eastwood, reference 8



# Example of “Ring Roost” Phenomena



Note intensity scale in dBZ



Courtesy of NOAA

“Ring Roosts” are flocks of birds leaving their roosting location for their daily foraging for food just before sunrise

Data collected on August 10, 2006  
5:25 to 6:15 AM

About 50 minutes of data is compressed into ~1.5 sec duration and replayed in a loop

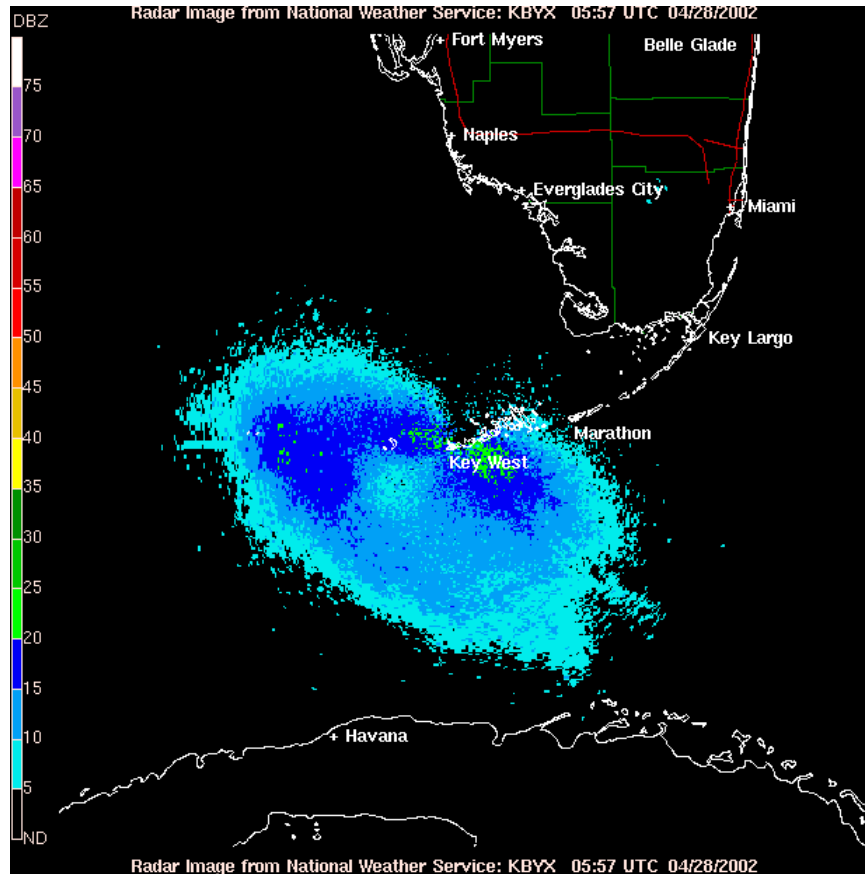
- Radar observations with C-Band, WSR-88 (NEXRAD) NOAA, Pencil Beam Radar located at Green Bay, Wisconsin



# Spring Bird Migration from Cuba to US



Note intensity scale in dBZ



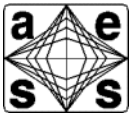
Data collected on April 28, 2002  
~1 - 3 AM

About 2 hours of data is  
compressed into ~3 sec duration  
and replayed in a loop

- Radar observations with C-Band, WSR-88 (NEXRAD) NOAA, Pencil Beam Radar located at Key West, Florida



# Bird Clutter



- **General properties**
- **Bird populations and density**
  - **Migration / Localized travel**  
Land / Ocean
  - **Variations**  
Geography, Height, Diurnal, Seasonal etc
- ➔ • **Radar Cross Section**
  - **Mean / Fluctuation properties**
- **Velocity / Doppler Distribution**
- **Effects of Birds on radar**
  - **Sensitivity Time Control (STC)**

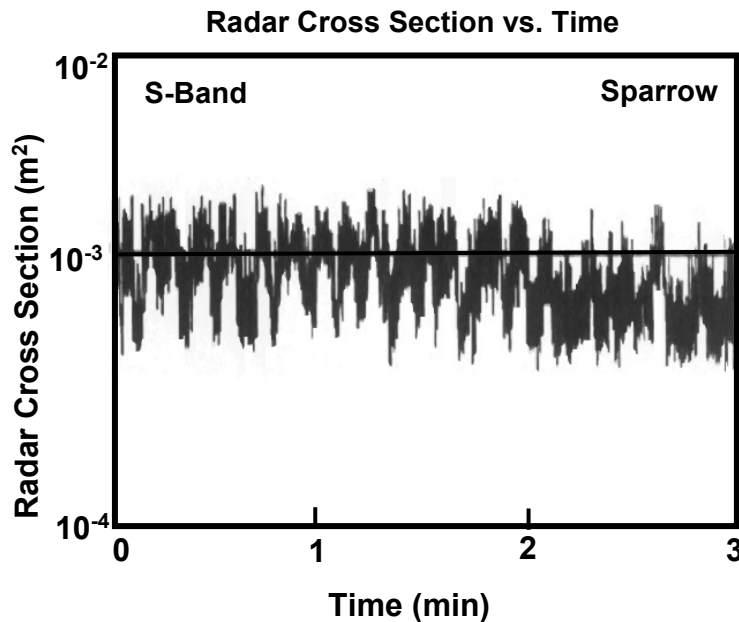
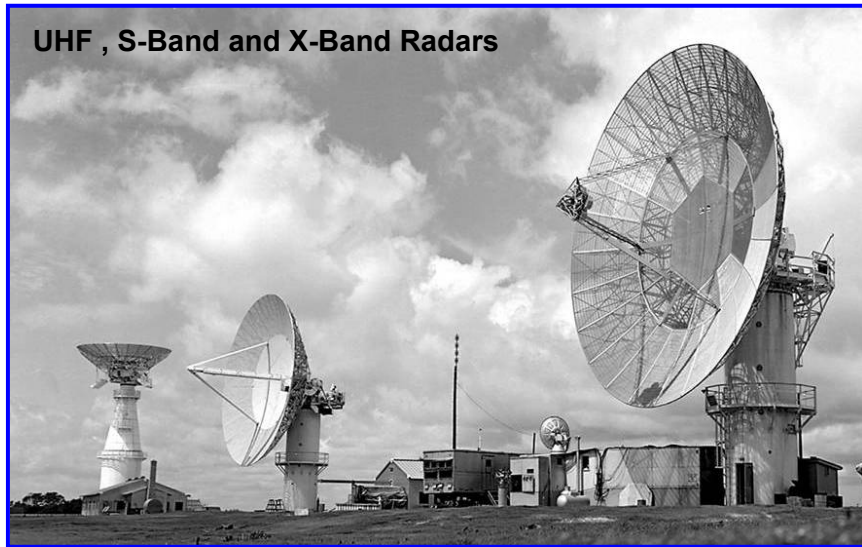


# Bird RCS Measurements



Joint Air Force NASA Radar Facility  
Wallops Island, VA

UHF , S-Band and X-Band Radars

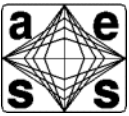


- In the late 1960s, Konrad, Hicks, and Dobson of JHU/APL accurately measured the radar cross section (RCS) of single birds and the RCS fluctuation properties.
  - Bird RCS fit a log-normal quite well
  - Like the Weibull distribution, it is a 2 parameter model that fits data with long tails

Adapted from Konrad, reference 12



# Summary of Measured Bird Cross Section\* Data

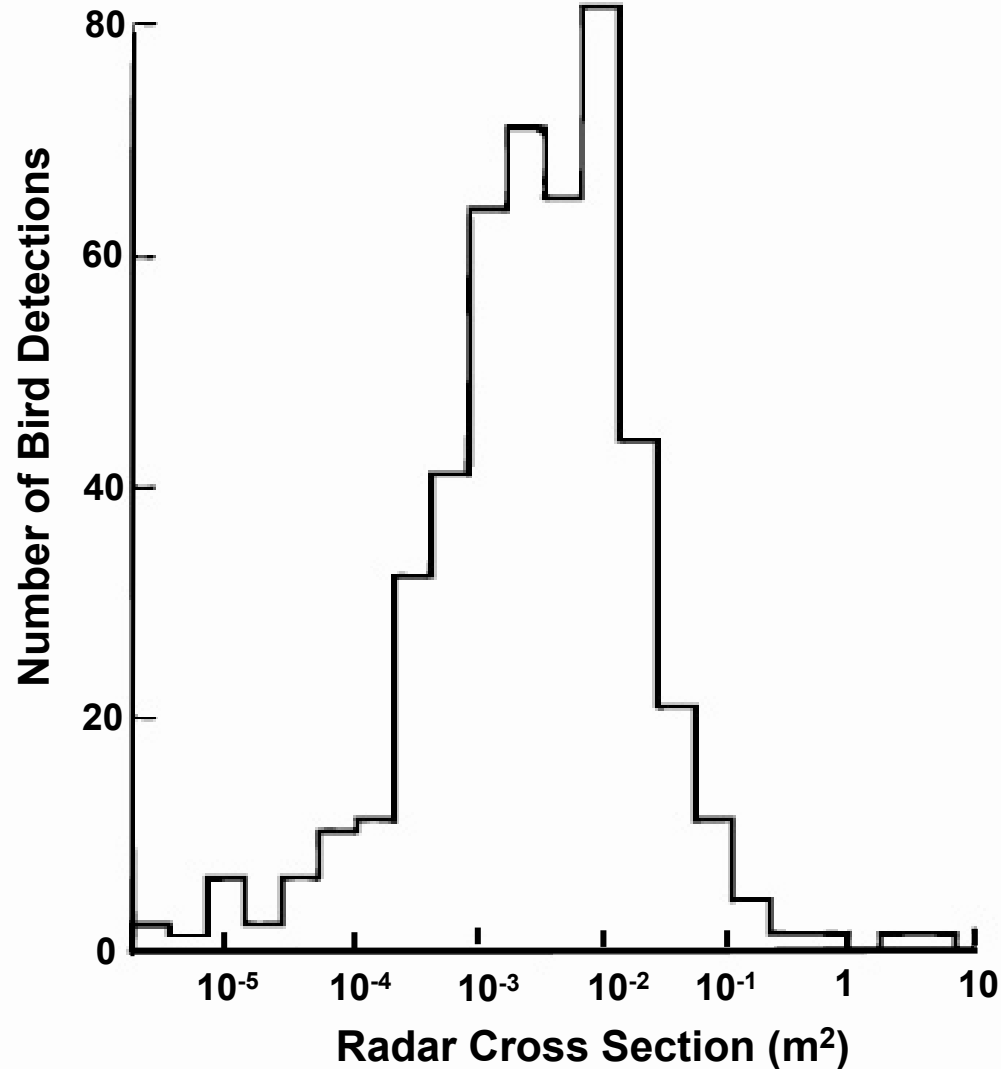


	<u>X-Band</u>	<u>S-Band</u>	<u>UHF</u>
<b>Grackle (male)</b>	<b>15.7</b>	<b>27</b>	<b>0.73</b>
<b>Grackle (female)</b>	<b>15.4</b>	<b>23.2</b>	<b>0.41</b>
<b>Sparrow</b>	<b>1.85</b>	<b>14.9</b>	<b>0.025</b>
<b>Pigeon</b>	<b>14.5</b>	<b>80.0</b>	<b>10.5</b>
<b>Units of RCS measurement</b>	<b>cm<sup>2</sup></b>		

Adapted from Konrad, reference 12



# Distribution of Bird Radar Cross Section



Adapted from Eastwood, reference 8





# Radar Cross Section Model



<b>Wavelength</b>	<b>Mean Cross Section (dBsm)</b>	<b>Standard Deviation of Log of Cross Section (dB)</b>
<b>X</b>	<b>-33</b>	<b>6</b>
<b>S</b>	<b>-27</b>	<b>6</b>
<b>L</b>	<b>-28</b>	<b>7.5</b>
<b>UHF</b>	<b>-47</b>	<b>15</b>
<b>VHF</b>	<b>-57</b>	<b>17</b>

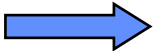
- **Wavelength dependence**
- **Fluctuation statistics of cross section (log normal)**

Adapted from Pollon, Reference 7



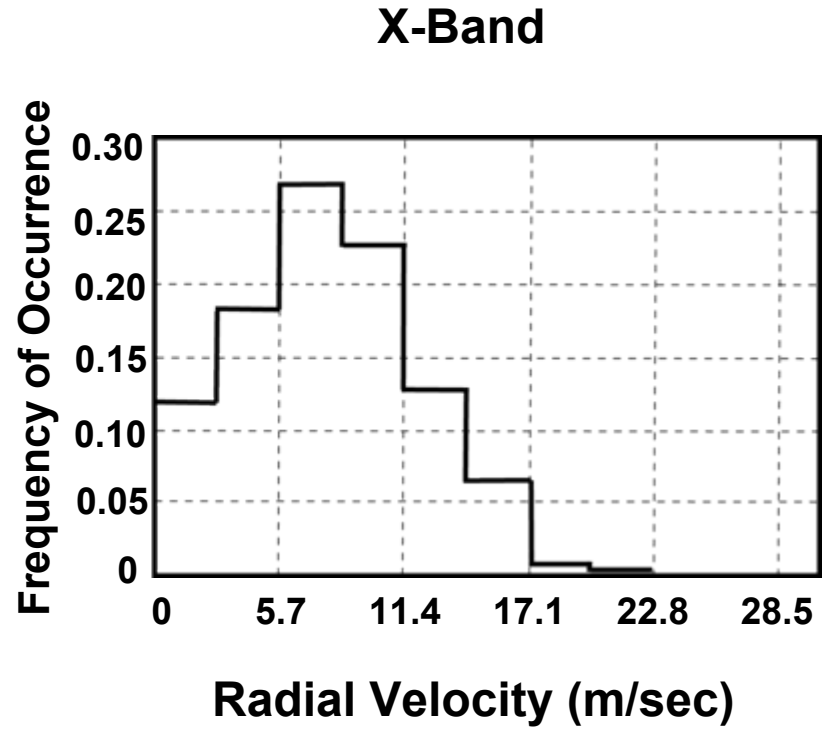
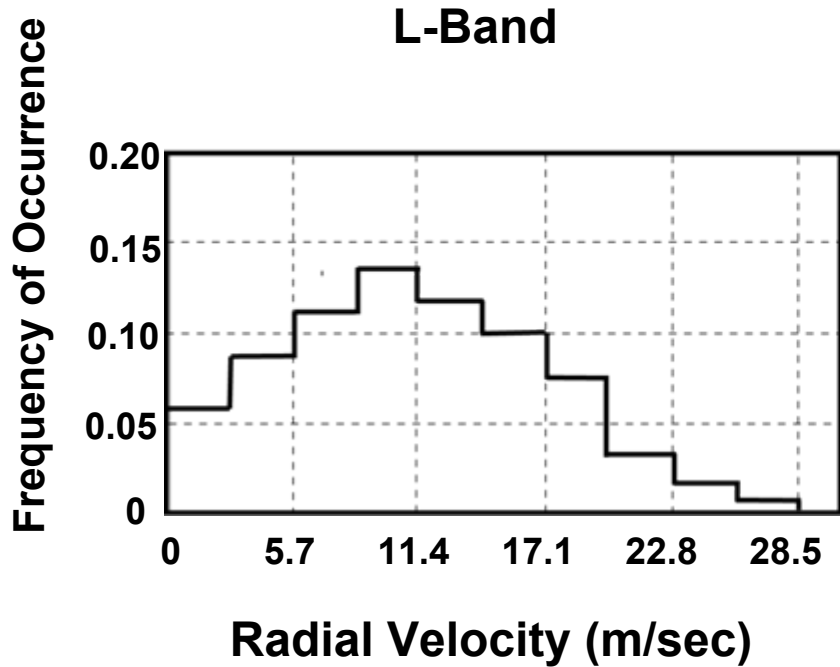
# Bird Clutter



- **General properties**
- **Bird populations and density**
  - **Migration / Localized travel**  
Land / Ocean
  - **Variations**  
Geography, Height, Diurnal, Seasonal etc
- **Radar Cross Section**
  - **Mean / Fluctuation properties**
-  • **Velocity / Doppler Distribution**
- **Effects of Birds on radar**
  - **Sensitivity Time Control (STC)**



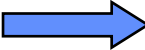
# Distributions of the Radial Velocity of Birds





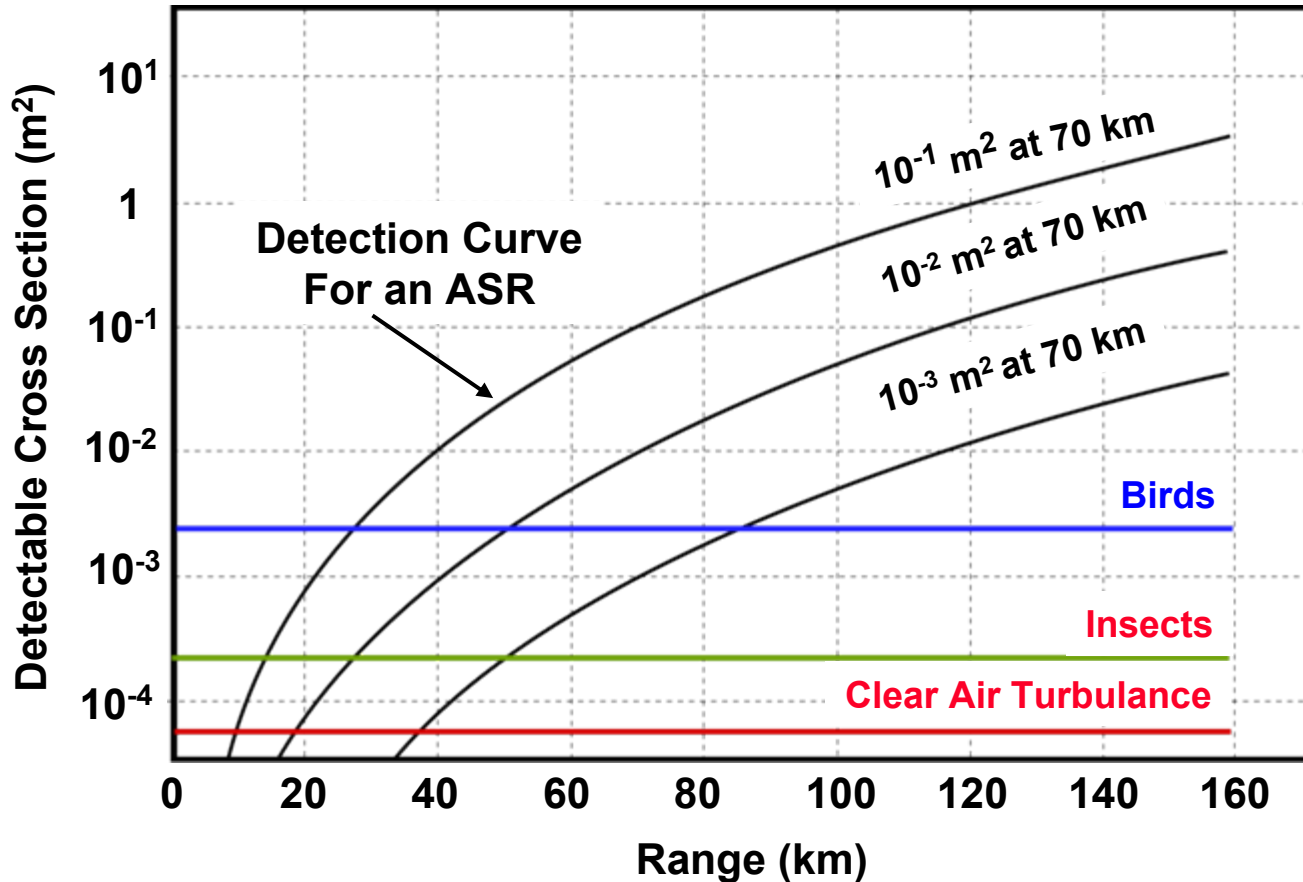
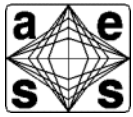
# Bird Clutter



- **General properties**
- **Bird populations and density**
  - **Migration / Localized travel**  
Land / Ocean
  - **Variations**  
Geography, Height, Diurnal, Seasonal etc
- **Radar cross section**
  - **Mean / Fluctuation properties**
- **Velocity / Doppler distribution**
-  • **Effects of birds on radar**
  - **Sensitivity Time Control (STC)**

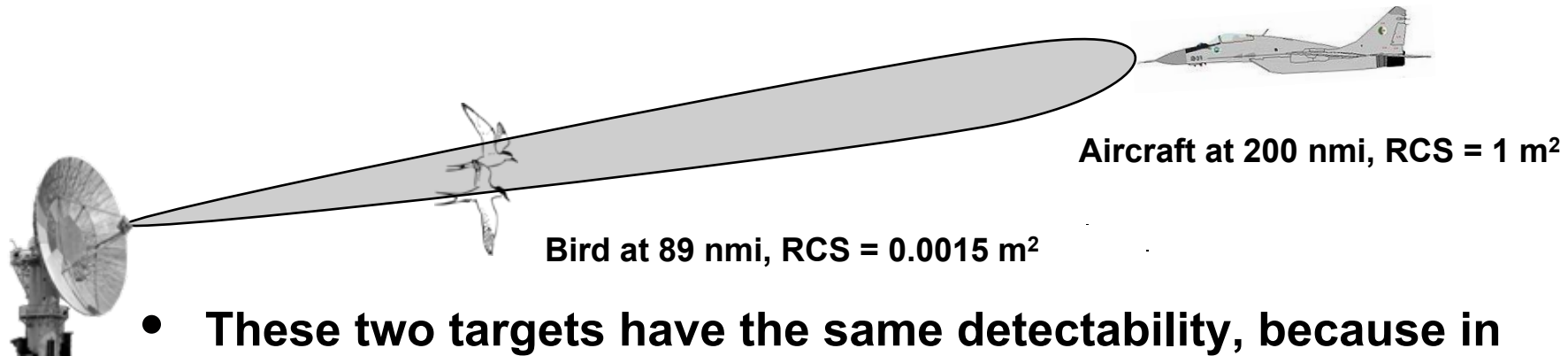


# Why Birds Are an Issue for Radars





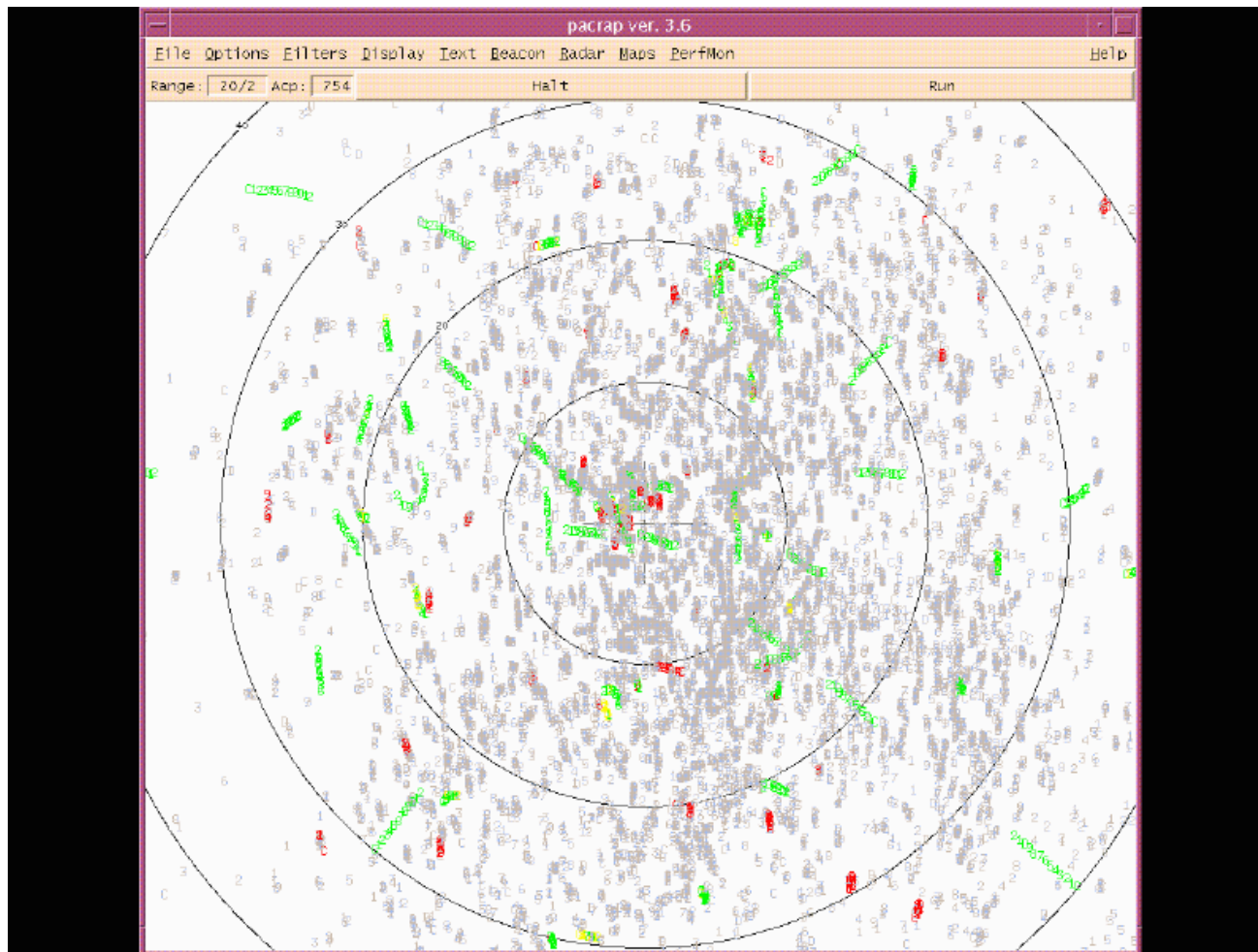
# Sensitivity Time Control



- These two targets have the same detectability, because in the radar equation: 
$$\frac{S}{N} \propto \frac{\sigma}{R^4}$$
- This false target issue can be mitigated by attenuating to the received signal by a factor which varies as  $1/R^4$ 
  - Can also be accomplished by injecting  $1/R^4$  noise to the receive channel
- Radars that utilize range ambiguous waveforms, cannot use STC, because long range targets which alias down in range, would be adversely attenuated by the STC
  - For these waveforms, other techniques are used to mitigate the false target problem due to birds



# Bird Example from Dallas-Fort Worth



**Radar & Beacon**  
**Beacon-Only**  
Radar Uncorrelated  
**Radar Correlated**



# Bird Clutter Issues - Summary



- **Birds are actually moving point targets**
  - Velocity usually less than 60 knots
- **Mean radar cross section is small, but a fraction of bird returns fluctuate up to a high level (aircraft like)**
  - Cross section is resonant at S-Band and L-Band
- **The density of birds varies a lot and can be quite large**
  - 10 to 1000 birds / square mile
- **Birds cause a false target problem in many radars**
  - This can be a significant issue for when attempting to detect targets with very low cross sections





# Insects

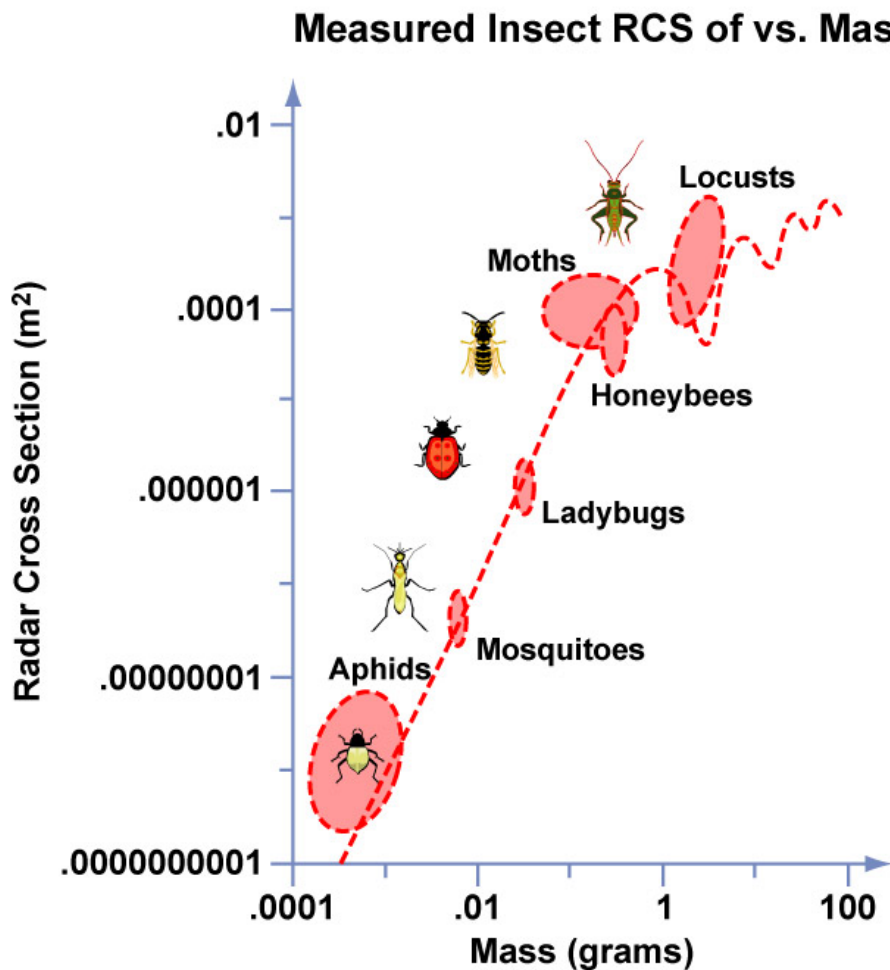
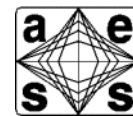


Figure by MIT OCW.

- Insects can cause false detections and prevent detection of desired targets
- Density of insects can be many orders of magnitude greater than that of birds
- Insect flight path generally follows that of the wind
- Cross section can be represented as a spherical drop of water of the same mass
- Insect echoes broad side are 10 to 1,000 times than when viewed end on

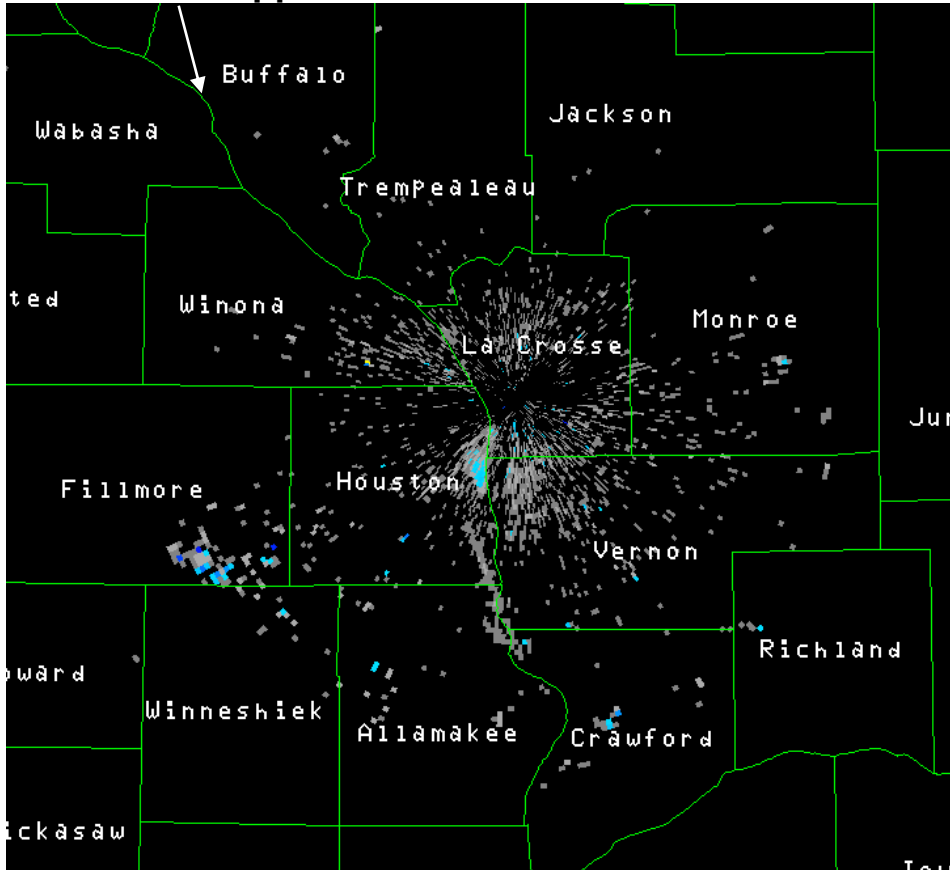
Adapted from Skolnik Reference 6



# Mayfly Hatching



Mississippi River



Courtesy of National Weather Service

Data collection - June 30, 2006

La Crosse is the breeding ground of the mayfly population of the world

~10s of billions of them hatch, live, and die, over a 1 ½ day period, each year in late June / early July

*Ephemeroptera* (mayfly)



Courtesy of urtica

- **Radar observations with C-Band, WSR-88 (NEXRAD) NOAA, Pencil Beam Radar located at La Crosse, Wisconsin (SW WI)**



# Summary



- **A number of different types of radar clutter returns have been described**
  - **Ground, sea, rain, and birds**
- **These environmental and manmade phenomena will produce a variety of discrete and diffuse, moving and stationary false targets, unless they are dealt with effectively**
- **A number of signal and data processing techniques can be used to suppress the effect of these radar clutter returns.**



# References



1. Billingsley, J. B. , *Ground Clutter Measurements for Surface Sited Radar*, MIT Lincoln Laboratory, TR-916 Rev 1, (1991)
2. Billingsley, J. B., *Low Angle Radar Land Clutter*, Artech House, Needham, MA, (2005)
3. Nathanson, F. , *Radar Design Principles*, McGraw Hill, New York, 2<sup>nd</sup> Ed., (1999)
4. Skolnik, M., *Radar Handbook*, McGraw Hill, New York, 3<sup>rd</sup> Ed., (2008)
5. Barton, D., *Radar System Analysis*, McGraw Hill, Artech House, Needham, MA, (1976)
6. Skolnik, M., *Introduction to Radar Systems*, McGraw Hill, New York, 3<sup>rd</sup> Ed. (2000)



# References - Continued



7. Pollon, G., “*Distributions of Radar Angels*,” IEEE Trans. AESS, Volume AES-8, No. 6, November 1972, pp. 721–726
8. Eastwood, E., *Radar Ornithology*, Methuen & Co, London, (1967)
9. Riley, J. R., “*Radar Cross Section of Insects*,” Proceedings of IEEE, February 1985, pp. 228–232
10. Vaughn, C. R., “*Birds and Insects as Radar Targets: A Review*,” Proceedings of IEEE, February 1985, pp. 205–227
11. Billingsley, J. B. , *Ground Clutter Measurements for Surface Sited Radar*, MIT Lincoln Laboratory, TR-786 Rev 1, (1993)
12. Konrad, et al, “*Radar Characteristics of birds in Flight*”, Science, vol 159, January 19, 1968



# Homework Problems



- **From Skolnik, Reference 6**
  - **Problems 7-2, 7.4, 7.9, 7.11, 7.15, and 7.18**